



Safe Haven is a newly refurbished bungalow in the pretty seaside village of Aberporth in West Wales. The property was completely redesigned in 2008, specifically to provide disabled access holidays, as we felt that there was very little choice available when looking for a holiday for disabled visitors in this area.

It has been tastefully decorated throughout to provide high quality accommodation to visitors using wheelchairs as well as those with limited mobility. There is not a single step in the whole place! It is the perfect place for those looking for comfortable holiday accommodation for the disabled.



The beautiful sea views from the luxurious living area and from the lovely garden and deck areas of the property are breathtaking and any holiday spent at Safe Haven will prove good for the soul!



We are only a few minutes walk away from sandy beaches with disabled access and the fabulous Ceredigion coastal path which links us to several nearby coves, such as Tresaith, Penbryn and Llangrannog. The section of the path between Aberporth and Helyg has recently been tarmacked to provide even greater disabled access and the views from the cliff top are truly

inspiring.



The centre of the village of Aberporth is a short walk away; amenities include a general stores, hairdresser, post office, launderette, ironmongers, chemist and café. There is also a good Chinese takeaway, a pub and other eateries within easy walking distance as well as a church and a chapel with regular Sunday services. There are two RADAR key operated toilets in the village.

Sea Views and Outside Area

The outside of the property has been levelled so that there are no steps and the tarmac driveway merges with the dropped kerb to the front of the property.



There is off road parking for two cars here with good side and rear access to a vehicle once it is parked.

The entrance has a wide double glazed low threshold door which opens inwards and is held by a magnetic doorstop.

There is a sensor light above the doorway which is activated by movement at night.

The large decked area can be accessed from the utility/WC area through a single door, the dining area through a sliding patio door and through the large sliding patio door from the lounge area.

The deck is large and flat with no steps and there are lovely views of the sea and the coastline from here. The lawned section of the garden slopes away from the deck and there are shrubs planted along the border. The central birdbath is surrounded by heathers.



In the Summer garden furniture is provided – a large table with umbrella and four chairs plus two loungers, and a charcoal barbecue for use on the deck.

There is an external light so that you can sit out at night and enjoy the sea air.

Kitchen Area

The fitted kitchen includes a dishwasher, fridge freezer, sink with lever taps, microwave, cooker and hob with extractor hood; there is a larder cupboard at one end providing easily accessed food storage to a wheelchair user; there are also drawers and cupboards for storage at an easily accessible height, together with wall cupboards.



The kitchen is fully equipped with kettle, toaster, hand blender etc and with crockery, cutlery and glassware for six people. The portable kitchen trolley from the hallway can be moved into the kitchen for further

storage or left in the hallway to keep the wine at the correct temperature!

There is an adjustable tray table that be moved around for your convenience. This may be used as a handy work surface in the kitchen for the wheelchair user. There is a set of four spotlights above the dining area and another above the kitchen area and table lamps near the TV and sofa.



The TV may be viewed from the kitchen and dining area by turning the TV gently on the turntable.



The bookcase near the dining area provides handy easily accessed storage for everyday dining equipment as well as some interesting books.

The deck can be accessed through the patio doors near the dining table as well as through the wider patio doors in the lounge area.

Living Area

A wide doorway from the hallway leads into the living areas; a magnetic doorstop keeps the door open for ease of access. The whole room is open plan and has laminated wood flooring. All light switches are at an



accessible height and have a dimmer function. There is a large HDTV with 88 Freeview TV and Radio channels together with Teletext and a DVD player. There is a

selection of DVDs, games and books provided for your entertainment.

A large 4 seater high level sofa is positioned in front of the extra wide patio doors to take advantage of the spectacular views of the sea and coastline, together with two comfortable armchairs.

A large economy 7 storage heater sits on the wall under the glass roof, another under the window in the kitchen area and a smaller heater near the door to the bathroom. They provide extra heating during the winter months.

A nest of tables and wicker games chest provide storage and somewhere to rest your cuppa!

The large oak dining table comfortably seats six and has six very comfortable high back dining chairs. Crockery is stored on an adjacent bookcase for ease of access and a second set of patio doors gives extra access to the large decked area and garden with lovely sea views.

There are three sliding doors leading off the living area, one to each of the bedrooms and one to the wetroom/bathroom.

Entrance/Hall/Utility

The entrance has a wide double glazed low threshold door which opens inwards and is held by a magnetic doorstop.



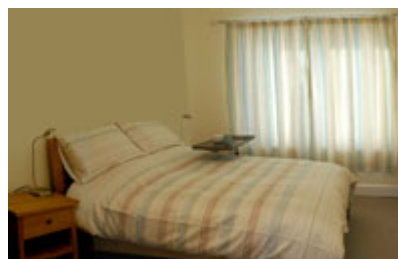
There is a sensor light above the doorway which is activated by movement at night. The main fuse box, light switches, coat hooks and sockets are located at a height which should be convenient to a wheelchair user.

There is a portable kitchen trolley for storage in the hall area; this can be relocated to the living area if and when required. There are electrical sockets in the hallway where you can charge up your wheelchair/battery/scooter equipment if necessary.

Leading out of the reception area there is a second WC and a front loading washing machine, together with the airing cupboard and a hand washbasin. A double glazed external door leads out onto the deck from this area.

Double Bedroom

The double bedroom has a wide, sliding door and plenty of room for a wheelchair to manoeuvre around the king size oak framed bed. If you require a hoist, please mention this when booking as this can be supplied on request for an extra charge.



There is an adjustable bed tray/table available that can be moved from one room to another for your convenience e.g. reading or breakfast in bed?

There is a double wardrobe with a full length mirrored door and on the inside the clothes rail is at a lower height than normal to accommodate a wheelchair user. The wardrobe has two pull out wire drawers for storage and a shelf above the hanging rail.

There are two halogen reading lights on the oak bedside tables at either side of the bed. The lights are touch controlled and dimmable. The bedside tables have a drawer and two shelves.



The light switch on the wall as you enter is at a low height and there is a pull cord to switch off the central light from bed. There is a rounded shelf in the corner where the HDTV sits. It has 88 Freeview TV and Radio channels, a remote control and teletext. There is also a tall, narrow chest of drawers for storage near the window.

The floor is carpeted with a sand coloured carpet that is not too thick to hinder wheelchairs and there is a portable heater in the bedroom for colder nights.

Twin Bedroom

The twin bedroom has two oak single beds. Once again the bedroom has a wide, sliding door and there is room for a wheelchair to access both of the beds. All the bedding is anti-allergy as are all the pillows.



If you require a hoist for this room, please mention this when you are booking as this can be supplied on request for an extra charge. The adjustable bed tray/table available can be moved into this room for your convenience if required e.g. reading or breakfast in bed.

The wardrobe has one mirrored door and inside the clothes rail is at a lower height than normal to accommodate a wheelchair user. The wardrobe also has two pull out wire drawers for storage and a shelf above the hanging rail.

There are two halogen reading lights on the bedside table situated between the beds. The bedside table has four drawers for storage. The light switch is at a low height and there is a pull cord to switch off the central light from bed.



In the corner near the window there is a tall chest of drawers for storage. The Radio/CD player sits

here but, if preferred the TV from the other bedroom can be plugged in here.

The floor is carpeted with a sand coloured carpet that is not too thick to hinder wheelchairs and there is a portable heater in the bedroom for colder nights.

Bathroom and Shower-room



The bathroom is accessed via a wide sliding door that can be locked with a cabin hook from the inside. The wet room has a special non-slip floor and is completely Accessible for wheelchair users.

There is a power shower and a shower chair on wheels for those who enjoy sitting down. The power shower unit is Accessible at wheelchair height and the white waffle shower curtain can be pulled across for privacy if required. There are grab rails on the shower wall for extra security and a panic button grab cord on the ceiling between the shower and the toilet in case of any difficulty.

There is a heated towel rail to keep your towels nice and warm and a fan heater on the wall if you need extra warmth. There is a shower mixer on the full sized bath for those who prefer a soak! A bath seat

can be arranged at extra cost if required. Please inform us at time of booking.

There are two wash basins – one at wheelchair height and one at a higher level for those who have difficulty bending. Both basins have lever taps for ease of use and large mirrors on the wall.

There is a shaving point and plenty of lighting and storage including a portable bathroom caddy for moving toiletries between the shower, bath and sink etc...



All the pull cords have different shaped handles and are at an Accessible height for wheelchair users. There are two grab rails beside the raised WC and also a portable frame for support that can be used on either WC.

Local Area

Safe Haven is about 6 miles north-east of the historic town of Cardigan in Cardigan Bay. Further up the coast are the villages and beaches of Tresaith, Penbryn, Llangrannog and Cwmttydu which all have their own unique charm. The centre of New Quay is less than half an hour away, with Aberaeron a further 10 minutes by car.

To the South, Ceredigion becomes Pembrokeshire at the border with St.Dogmaels. The Ceredigion and Pembrokeshire coastal paths now offer uninterrupted walks along the beautiful coastline

We are also blessed with some wonderful places to eat in our area! From breakfast time through until midnight you will find a large choice of cafes, pubs and restaurants offering fresh, local produce and delicacies, and there are more than a few worthy of special mention. We



have wonderful authentic Italian cooking, Chinese, Thai and Indian food, home made ice-creams in many and varied flavours, traditional pub grub and truly delicious restaurant fare available in diverse places on our doorstep or only minutes away. In fact, don't bring any clothing on holiday that's already a little tight!!

Please use the following links to learn more about the area.

**cardigan-chamber.co.uk
visitcardigan.com**

Whats on

The information pack at Safe Haven provides a comprehensive guide to events in the area including dates, location, contact details and maps. If you can't wait to find out what's on offer, here's a taster of what you could be doing during your holiday!



National trust country house at Llanerchaeron – visit the website and look up the calendar for events by date.

Food festivals

June - Llandysul Food Festival,

July - Lampeter Food Festival,

Cardigan Bay - Aberaeron Seafood Festival, August –

Cardigan river and food festival, September –

Aberystwyth Food Festival, November – Llandysul

Christmas Fair, December - Aberystwyth Christmas

Fair

Agricultural shows

Cardigan Show - July, Nevern Show - Wednesday 5th

August 2009, Pembrokeshire Show - 18th,19th, 20th

August 2009-02-09

Mwldan Open Air Theatre at Rhosygilwen and St. Dogmaels Abbey

Open Gardens

Regattas -New Quay – 13-15th August Cardigan

Antiques - visit www.walesantiques.co.uk and click on the Location Map

Cardigan Medieval Day – Sat 25th July 2009

Carnivals – see local press

Fetes and Fairs – see visitcardigan.co.uk

Barley Saturday Cardigan – April 2009

**Aberaeron Welsh Cob weekend – please see
aberaeronfestival.com**

Aberaeron Rugby Sevens weekend in August

**You can also find up to date information at
wherecanwego.com Enter postcode SA44 to see
what's on!**

**The Aberporth area has a whole wish list of activities
on offer for all ages and all abilities throughout the
year. Whether you want to spend your time near the
sea, on or near the river, in the car, out on foot or in
your wheelchair, there is something for everyone to
enjoy in the area.**

**Activities available with good disabled access
include:-**

**Theatre and cinema at the Mwldan in Cardigan
Wildlife Centre, Cilgerran**

Coastal Farm Park, Gwbart

Rainforest Butterfly Centre, Aberporth

National Coracle centre, Cenarth

**Museum for the Internal Combustion Engine,
Tanygroes**

Museum of Childhood, Henllan

**Famous Cenarth Falls and Caws Cenarth Cheese,
Cenarth**

**Cadw castle at Cilgerran and the Welsh Woollen
Museum at Drefach**

**National Trust property at Llanerchaeron and the
ancient Abbey at St. Dogmaels**

**Boat and Fishing trips out of New Quay and Gwbart
Sailing, regattas and many other watersports in New
Quay and Cardigan**

Steam Railways at Henllan and Cynwyl Elfed

**Gardens and Houses open to the public
Art, Antiques and Crafts at Markets, Workshops and
Galleries**

**Festivals and Shows of all kinds throughout the area
at various times of the year Walking, Rambling and
Cycling trails, Bird Watching and Wildlife... to name
but a few.**

**For information on the above and lots more please
see the Welcome Pack Handbook at Safe Haven. See
our link page for sites offering a taste of what you can
expect**

Equipment

**As well as the various equipment available in the
accommodation we can supply more specialist
equipment for hire. Below is an example of equipment
available, if there is any equipment you require please
contact us for prices and details.**

Huntleigh TX150 Hoist SWL 150 Kg

Days Bed with cot sides

Westmeria air mattress

Bathlift

Tariff and Availability

**Safe Haven is open all year round and sleeps 4 guests
and a cot. Availability shown on website. Low season
short breaks available. Please contact us for
availability.**

March 09	Sat 7th £350	Sat 14th £400	Sat 21st £450	Sat 28th £500	
April 09	Sat 4th £550	Sat 11th £550	Sat 18th £500	Sat 25th £500	
May 09	Sat 2nd £500	Sat 9th £500	Sat 16th £550	Sat 23rd £550	Sat 30th £650
June 09	Sat 6th £650	Sat 13th £650	Sat 20th £650	Sat 27th £650	
July 09	Sat 4th £700	Sat 11th £800	Sat 18th £850	Sat 25th £850	
August 09	Sat 1st £850	Sat 8th £850	Sat 15th £850	Sat 22nd £850	Sat 29th £850
September 09	Sat 5th £750	Sat 12th £700	Sat 19th £600	Sat 26th £600	
October 09	Sat 3rd £500	Sat 10th £500	Sat 17th £500	Sat 24th £500	Sat 31st £500
Please contact us for Rates and Availability					
November 09	Sat 7th	Sat 14th	Sat 21st	Sat 28th	
December 09	Sat 5th	Sat 12th	Sat 19th	Sat 26th	
January 2010	Sat 2nd	Sat 9th	Sat 16th	Sat 23rd	Sat 30th
February 2010	Sat 6th	Sat 13th	Sat 20th	Sat 27th	

Price inclusive of linen, electricity, heating and VAT @ 15%. A 50% non-returnable deposit is required at time of booking. The balance will be due two weeks prior to arrival. Please make your cheques payable to Mrs. F. Evans, Thank you very much.

Guide dogs are welcome with prior notice, sorry, otherwise no pets. Safe Haven has a no smoking policy indoors. You may smoke in the garden if you must!

Contact Information and Location

Contact: Fiona Evans

Telephone: 07896 428936

Website: www.disabled-access-holidays.uk.co.uk or www.safehaven-wales.co.

e-mail: fiona@disabled-access-holidays.co.uk

You will receive a more accurate map with directions and postcode for Satellite navigation to the property on payment of your deposit.



Links

www.visitcardigan.com - places to visit

www.la-calabria.co.uk - Restaurant

www.shiptresaith.co.uk - Restaurant

www.visitcardigan.co.uk - where to eat

www.walkcardiganbay.com – guide to walks in the area

www.newquayboattrips.co.uk – fishing and sightseeing trips from New Quay

www.butterflycentre.co.uk – tropical butterfly centre

www.cardiganisland.com – coastal farm park

www.cawscenarth.co.uk – local award winning cheese makers

www.llwynhelygfarmshop.co.uk – local award winning farm shop

www.baytoremember.co.uk – boat trips from Aberporth

www.llain.co.uk – sailing and activity centre

www.castellhenllys.com – iron age fort

www.urdd.org/llangrannog - ski slope and outdoor activities

www.oakwoodthemepark.co.uk – roller-coasters and thrills!

www.nationaltrust.org.uk – Llanerchaeron – local Country house

www.cardigancountyshow.co.uk - Cardigan Agricultural Show

www.pembrokeshirecountyshow.co.uk – Pembrokeshire 3 day Agricultural show

www.nevernshow.org.uk - Nevern Agricultural show

www.ngs.org.uk – National Gardens Scheme – gardens open to the public

www.nqyc.co.uk - New Quay Yacht Club

www.teifiboatingclub.co.uk - Cardigan Boating Club based in Gwbert

www.walesantiques.co.uk – guide to antique dealers and shops in the area

www.mwldan.co.uk– Cinema and Theatre in Cardigan

Safe Haven Disabled Holiday Home, Aberporth, Ceredigion, West Wales, UK. Tel: 07896 428936

Site Designed by Coryn Web Design